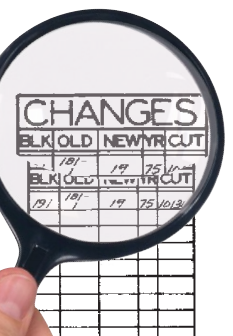
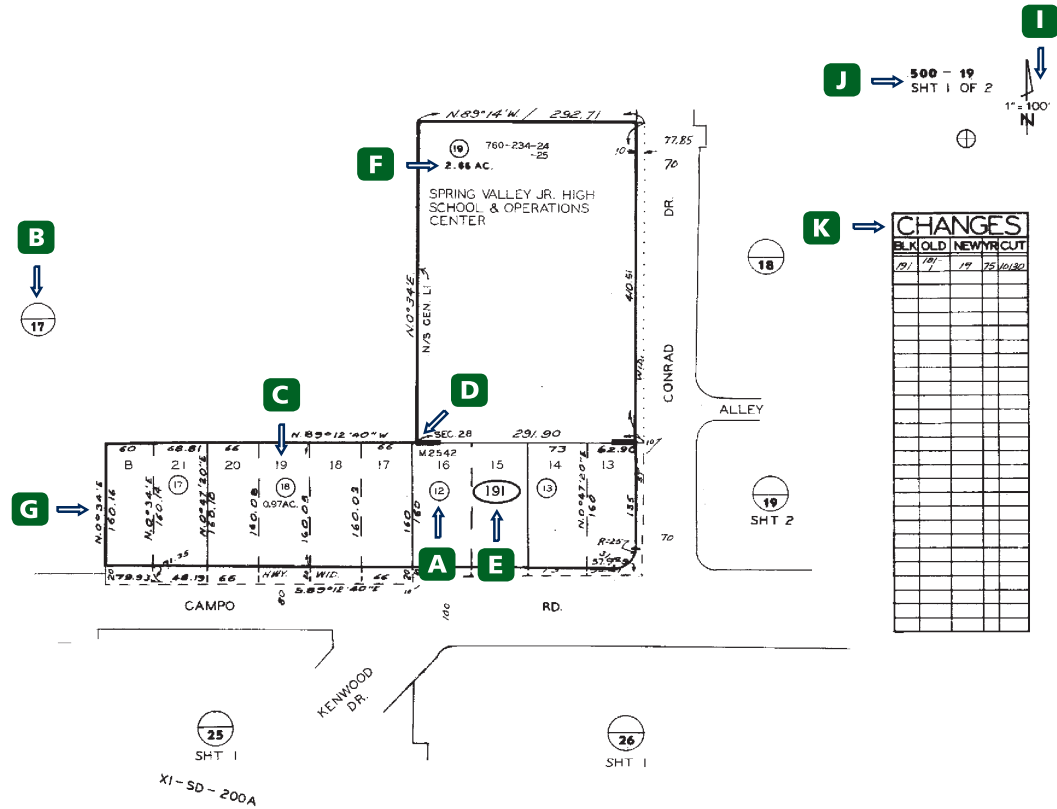




## GUIDE TO READING AN ASSESSOR'S PLAT MAP

- A Parcel Number**  
Always in a small circle.  
(occasionally an oval).  
  
Attached housing will have 2 additional numbers (unit #) at the end of the parcel number.
- B Book & Page Circle**  
Indicates what map page (# below the line) adjoins our map and in some cases which Assessor's Book (# above the line).
- C Lot Number**  
Never Circled; shows the subdivision lot number of the property.
- E Page Number**  
Of the Assessor's Book, Page & Picture Corner 1#. This is the full, 3 digit number (coinciding with column one in the changes box); always in an oval.
- G Distances & Bearings**  
Data on borders of the map. This data is from recorded deeds or surveys.
- I North Arrow**  
Will not always be pointing "up".  
SCALE: Is useful if map has been printed to proper size.
- K Changes Box**  
Provides the history of the map page.
- D "Picture Corner"**  
Shows the exterior corners of subdivision map boundaries as shown on the plat.
- F Acreage Figures**  
A decimal number with AC following. Not always accurate. Use only for estimate.
- H Lower Right**  
Brief legal description of properties included on this page.
- J Assessor's Book Number**  
Followed by first two digits of the Page Number, located in the upper right corner next to arrow.



- H** → MAP 2542 - MT HELIX GATEWAY UNIT NO. 1  
SEC 28 - T16S-R1W - POR NW 1/4 OF SE 1/4  
RDS 2697.4293
- CUT**  
Refers to the Assessor's file for document number, re: the change
- BLK**  
Full, three-digit page number area of map.
- YR**  
Assessed tax year the change took place.
- OLD**  
The old (now changed) parcel number.
- NEW**  
The new (changed) parcel number.